

**DUPAGE COUNTY
COMMUNITY DEVELOPMENT COMMISSION
OVERVIEW
2007**

GRANT PROGRAMS ADMINISTERED BY THE CDC

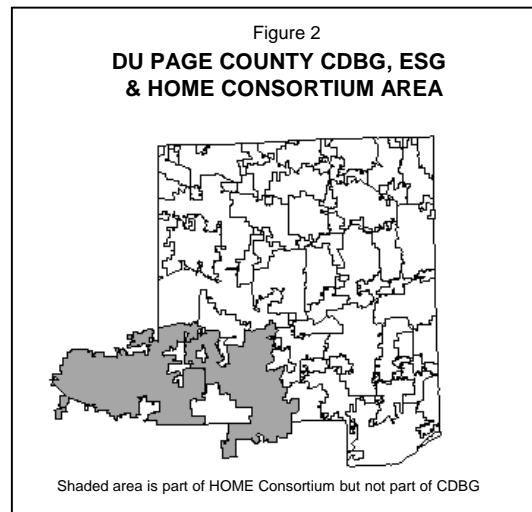
The information below provides a summary of the grant programs that fund community development, affordable housing, and homeless activities. For the 2007-2008 program year, Dupage County anticipates receiving over \$9 million and will fund a wide variety of activities. Because of the priority on affordable housing, 67% of this total goes toward housing, 11% goes toward public services for persons in need, and 12% is used to preserve and improve affordable neighborhoods. Only 10% is used for administration and planning.

Figure 1 Funds Expected for 2005		
Program	General Description	Amount
CDBG	Funding to provide assistance to low and moderate income persons and persons with special needs by supporting housing activities, public improvements, and public services.	\$4,109,904
HOME	Funding to provide financial assistance to government agencies, non-profit groups, and for-profit organizations to maintain and increase the supply of affordable housing.	\$2,364,860
ADDI	Funding to provide downpayment assistance to low-income, first-time homebuyers	\$49,443
ESG	Funding to support providers of shelter and services to homeless persons by supporting homeless prevention activities, delivery of essential services to the homeless, and maintenance and operation of facilities for the homeless.	\$156,186
Other Resources	Income that is generated from prior year's investments of CDBG and HOME funds and other funds that must be reprogrammed to new activities.	\$2,731,181
Total		\$9,411,574

GEOGRAPHIC AREAS COVERED

The geographic areas covered by these grant programs are not always defined strictly by DuPage County's borders. Figure 2 shows the general area of the "DuPage County HOME Consortium." This is the area covered by the Consolidated Plan (the plan that describes priorities for the use of these grant funds). The following describes the geographic areas of applicability of the grant programs.

- The CDBG program area of applicability includes all areas inside DuPage County but outside of Naperville, Bolingbrook, and Aurora. These communities are excluded because they have their own CDBG programs and receive a separate grant. Any applicant wanting to do a project in these communities should contact them directly.
- The HOME program area of applicability also includes Aurora and Naperville, including areas outside of DuPage. These two municipalities are not large enough to receive their own HOME funds, so they joined the DuPage County Consortium. This brings additional HOME funds into the area based on their population. Bolingbrook is not part of DuPage County's HOME program.
- The eligible area for the ESG program and the SHP program is anywhere inside DuPage County.



APPLICATION DUE DATES

Figure 3 shows the general due dates for different types of applications. Selection of the activities to be funded by each program is uses selection criteria to evaluate and rank each application or proposal. Applicants should check notices or call the Community Development Commission office for specific due dates in a particular year. The selection criteria are included in the application packages for each program.

Figure 3
GENERAL SCHEDULE FOR CDBG, ESG, AND HOME PROGRAMS

Activity	Ja	Fe	Ma	Ap	Ma	Ju	Jy	Au	Se	Oc	No	De
CDBG/ESG applications due												
HOME/HDF applications due												
Continuum of Care initial proposals due												
Continuum of Care final applications due												

THE GRANT PROGRAMS

COMMUNITY DEVELOPMENT BLOCK GRANT (CDBG)

Type of Grant Entitlement grant, County is recipient with responsibility for assuring compliance with all statutory and regulatory requirements.

Eligible Activities May be used for a wide variety of activities benefiting low-income persons.

- Neighborhood Investment (e.g., sewer, water, streets, sidewalks, parks. etc.)
- Public Facilities (e.g., senior center, low income medical clinic, food bank, etc.)
- Housing (acquisition, rehab, and home buyers assistance)
- Accessibility Improvements for People with Disabilities
- Public Services (e.g., homeless services, family and drug counseling, neighborhood services, etc.)
- Planning
- Administration of the Program

Primary Policy Groups Community Development Commission (CDC) and the CDC Executive Committee. HOME Advisory Group oversees the special affordable housing set-aside known as the Housing Development Fund. (see description of these groups below)

Submitting Applications Generally accepted in October of each year. Stakeholder groups begin meeting in the summer, and participation is a prerequisite for some types of applications. Housing Development Fund (see below) applications are accepted Twice per year (generally in December and July).

EMERGENCY SHELTER GRANT (ESG)

Type of Grant Entitlement grant, County is recipient with responsibility for assuring compliance with all statutory and regulatory requirements.

Eligible Activities May be used to support facilities and services for the homeless and persons at risk of homelessness.

- Homeless Prevention (e.g., emergency rental assistance or utility payments)
- Essential services (e.g., counseling and employment services)
- Maintenance and Operation of Homeless Shelters

Primary Policy Group DuPage County Homeless Continuum of Care Chairpersons' Committee and the Community Development Commission (CDC) Executive Committee. (see description of these groups below)

Submitting Applications Generally accepted in October of each year. Homeless Continuum meets throughout the year, and participation in the Continuum's activities is a prerequisite for submitting an application.

AMERICAN DREAM DOWNPAYMENT INITIATIVE (ADDI)

Type of Grant Entitlement grant, County is recipient with responsibility for assuring compliance with all statutory and regulatory requirements. Administered as part of the HOME Investment Partnerships Program (HOME)

Eligible Activities ADDI funds may only be used for downpayment assistance towards the purchase of single family housing by low-income families who are first-time homebuyers. Rehabilitation that is completed in conjunction with a home purchase assisted with ADDI funds is also an eligible activity under the ADDI statute.

- Acquisition costs
- Related reasonable and necessary soft costs
- FY 2004 and subsequent years, development hard costs for related rehabilitation, including the cost of reduction of lead paint hazards and the remediation of other home health hazards (may not exceed 20 percent of the County's annual ADDI allocation).

HOME INVESTMENT PARTNERSHIPS ACT (HOME)

Type of Grant Entitlement grant, County is recipient with responsibility for assuring compliance with all statutory and regulatory requirements.

Eligible Activities May be used to support development of rental or owner housing affordable to low income persons.

- Acquisition of Land and Buildings
- New Construction
- Rehabilitation
- Home Buyers Assistance

Primary Policy Group HOME Advisory Group. (see description below)

Submitting Applications Accepted twice per year (generally in December and July).

HOUSING DEVELOPMENT FUND (HDF)

Type of Grant This is a set-aside of funding for affordable housing production from the CDBG program described above, so it is not really a separate grant.

Eligible Activities May be used to support rental or owner housing affordable to low income persons.

- Acquisition of Land and Buildings
- Rehabilitation
- Home Buyers Assistance (though usually funded from the HOME program)

Primary Policy Group HOME Advisory Group. (see description below)

Submitting Applications Accepted twice per year (generally in December and July).

HUD CONTINUUM OF CARE SUPPORTIVE HOUSING PROGRAM (SHP)

Type of Grant Homeless providers apply directly to HUD. However, the DuPage County Continuum of Care reviews these applications and recommends to HUD regarding the activities to fund. Therefore, applicants must work with the DuPage County Continuum.

- Eligible Activities** May be used to support housing and services for homeless persons.
- Transitional housing that facilitates the movement to permanent housing within 24 months
 - Permanent housing for homeless persons with disabilities
 - Supportive services only
 - A “Safe Haven” form of supportive housing to serve hard to reach homeless persons
 - Innovative supportive housing that is outside the scope of other SHP components (must be pre-approved)

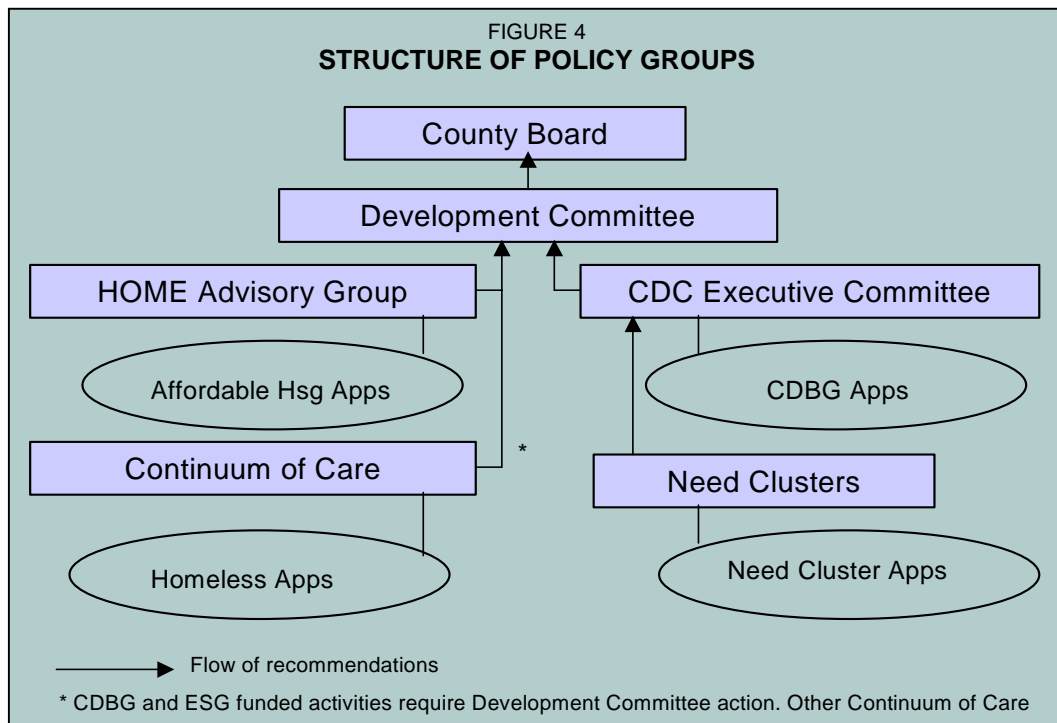
Primary Policy Group Homeless Continuum of Care Chairpersons’ Committee

Submitting Applications Applications submitted in April, but new proposals must be reviewed by the Continuum’s Needs Assessment Committee prior to submittal. Needs Assessment review meetings are scheduled in February. Participation in the Continuum’s activities is a prerequisite for submitting an application.

STRUCTURE OF THE POLICY GROUPS FOR THESE GRANT PROGRAMS

This section discusses the basic structure of policy groups that oversee these grants and when applications are accepted.

Figure 4 shows the organization of the policy groups involved with these grant programs. The CDC Executive Committee is responsible for the development of the Consolidated Plan for Housing and Community Development. The Need Clusters (essentially groups of stakeholders) advise the Executive Committee, and the full CDC meets only occasionally to act on the Consolidated Plan and to elect the Executive Committee and officers. The HOME Advisory Group advises the County directly on the use of HOME and HDF dollars for affordable housing financing.



THE COMMUNITY DEVELOPMENT COMMISSION (CDC) AND THE CDC EXECUTIVE COMMITTEE

These are the primary policy groups advising the County Board on the CDBG and ESG programs. The CDC is structured the way it is for the following reasons.

1. **The County cannot receive CDBG funds without the participation of the municipalities.** “Entitlement” Counties must have a population of 200,000 to receive CDBG funds, and there are only 104,000 people in unincorporated DuPage. Municipal participation makes it possible to receive funds and assures that the county receives the maximum amount. All municipalities except Naperville, Aurora, and Bolingbrook allow their population to be counted toward the County’s CDBG program.
2. **Municipalities cannot receive CDBG funds if the County does not apply for them.** HUD regulations recognize DuPage County as the official grantee. Except for Aurora, Bolingbrook, Naperville, Wheaton, and Downers Grove, none of the municipalities are large enough to receive their own CDBG funds. The State will not fund projects in cities located in entitlement counties from its statewide small cities pool. Aurora, Bolingbrook, and Naperville have their own CDBG program, but Wheaton and Downers Grove have remained with the County as joint applicants.
3. **The County Board set up the CDC in 1975 as a response to this codependency.** The CDC must maintain balanced representation between the municipalities and the County, and 26 municipal members of the CDC have signed the required intergovernmental agreement.
4. **Advisory groups to the CDC were established in response to HUD Consolidated Planning regulations requiring “stakeholder” input.** In 1996, five advisory “need clusters” were created to advise on programs to meet elderly needs, the needs of families in crisis, housing and homeless needs (evolved into the Homeless Continuum of Care), needs of neighborhood resource centers, and the needs of people with disabilities.

Membership and Schedule of the CDC Executive Committee

Membership Makeup: 12 members – The Chairmanship alternates each year between the County and the municipalities. There are two officers and ten other members.

Appointment Method: Members are elected by the full CDC as per by-laws.

Meeting Schedule: 2nd Tuesday of month – 7:30 a.m.

Membership and Schedule of the Community Development Commission

Membership Makeup: 52 members (26 county and 26 municipal)

Appointment Method: Each unit of government appoints its representative.

Current Members: All 18 County Board members are on the CDC as representatives of the County, and two DuPage Housing Authority representatives also represent the County. Municipalities represented on the CDC are as follows:

Addison	Darien	Hinsdale	Westmont
Bartlett	Downers Grove	Lombard	Wheaton
Bensenville	Elmhurst	Oakbrook Terrace	Willowbrook
Bloomingtondale	Glen Ellyn	Roselle	Winfield
Burr Ridge	Glendale	Villa Park	Wood Dale
Carol Stream	Heights	Warrenville	Woodridge
Clarendon Hills	Hanover Park	West Chicago	

Meeting Schedule: Typically, Committee meetings take place on the second Tuesday of every month at 7:30 a.m. Every Spring, Committee members, a new Chairman and Vice-Chairman are elected to serve the following year.

THE HOME ADVISORY GROUP (HOMAG)

The HOMAG is the primary advisory group on the use of HOME funds and the Housing Development Fund (HDF). It is set up the way it is for the following reasons.

1. **The County receives HOME funds according to a formula that is similar to CDBG, so municipal participation is also essential in this program.** In addition to the HOME program, this group also advises on the HDF, and it is funded with CDBG funds. Therefore, recommendations on both of these affordable housing financing programs come from the HOMAG.
2. **The HOMAG's members represent the membership of the "DuPage County HOME Consortium."** The County is the lead agency, but four municipalities (Aurora, Naperville, Downers Grove, and Wheaton) are separate members of the consortium. The number of representatives is based on the amount of HOME dollars brought to the consortium because of their participation. The County Board elected to appoint the CDC Executive Committee as its representatives on the HOMAG. Each of the four municipalities has entered into an intergovernmental consortium agreement with the county.

Membership and Schedule of the HOME Advisory Group

Membership Makeup:	16 members - The CDC Executive Committee members are also members of the HOMAG. The CDC Chairperson also chairs this group.
Appointment Method:	Members are appointed by the consortium members.
Meeting Schedule:	4 th Tuesday of month – 7:30 a.m.

DUPAGE COUNTY CONTINUUM OF CARE

The Continuum of Care is a multi-agency collaboration that is facilitated by DuPage County Community Services. Its mission is to eliminate homelessness, and it is the primary policy organization for managing HUD Continuum of Care funding (over \$2.0 million per year), State homeless funding (about \$100,000 per year), and the County's Community Development homeless funding (about \$425,000 per year).

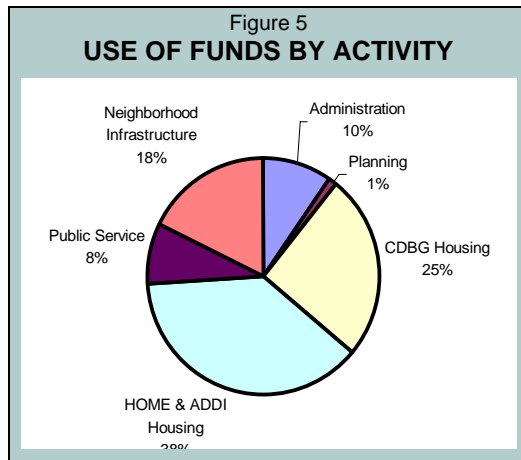
There are approximately 130 members of the Continuum. The full continuum meets generally twice a year. The working committees are: (a) the Needs Assessment Committee, (b) the Community Outreach Committee, and (c) the Grants/Funding Committee. The primary policy committee is the Chairperson's Committee, which is made up of the chairs of the other three committees plus the Continuum's coordinator and facilitator. Below are some key points about the structure of the Continuum and its funding.

1. **HUD requires a formal Continuum of Care to receive Supportive Housing Program funding.** Over \$2.0 million in homeless funding comes to DuPage each year from HUD' Supportive Housing Program. Funds are awarded on a competitive basis, and DuPage County would not meet the minimum requirements without a formal continuum where homeless service providers are actively involved in the decision making process.
2. **The County does not manage grants that homeless service agencies receive from the Supportive Housing Program.** Supportive Housing Program funding is not passed through the County to the grantee agencies. Although the Continuum of Care collaborative selects the projects to be funded (i.e., recommends to HUD), each grantee agency contracts directly with HUD.

2007 ACTIVITIES

This section describes the specific activities that will be undertaken in the 2007 program year, as outlined in DuPage County's 2007 Action Plan. It outlines projects that will be funded in 2007 by the Community Development Block Grant (CDBG), HOME Investment Partnerships (HOME), Emergency Shelter Grant (ESG), and American Dream Downpayment Initiative (ADDI) programs. The funds available from these grant programs includes new grants expected to be received in 2007. Additionally, this Action Plan covers the use of program income earned on prior years' expenditures and investments, such as loan proceeds and repaid funds, and the use of reallocated dollars from prior years.

ACTIONS TO ADDRESS PRIORITY NEEDS



Actions to be taken in the coming program year (April 1, 2007 to March 31, 2008) to meet the needs described in the ConPlan are outlined in the following pages.

- Figure 5 shows the general allocation of these funds by type of activity.
- Figure 6 provides a summary of the resources that will be available to meet needs.
- Figure 7 provides a summary of the sources of estimated program income.
- Figures 8 through 17 list the funded activities that will focus on these needs as funded by the County's CDBG, ESG, HOME, and ADDI programs. With each one of these tables is a listing of any special conditions that must be met before funds can be expended on these activities.

SPECIFIC ACTIVITIES TO BE FUNDED IN 2007 TO ADDRESS PRIORITY NEEDS

Figure 6 outlines the CDBG, HOME, ESG and ADDI resources that are expected to be available in 2007, including new grants, program income, and funds available for reallocation to new activities.

**Figure 6
FUNDING SOURCES EXPECTED IN 2007**

Entitlement Grants (includes reallocated funds)	
CDBG: \$4,109,904	
HOME: \$2,364,860	
ESG: \$156,186	
ADDI: \$49,443	\$6,680,393
Reprogrammed Prior Year's Funds (Table 7)	\$874,136
Total Estimated Program Income (Table 7)	\$1,857,045
Total Funding Sources	\$9,411,574

**Figure 7
ESTIMATED PROGRAM INCOME**

Source	CDBG	HOME
1. Coulter Courts		\$51,158
2. Finley Properties	\$22,431	
3. Hamilton Townhouse Association Loan Payment	\$47,228	
4. Joseph Corporation		\$1,788
5. Little Friends Loan Payment	\$6,604	
6. Maple Court Loan Payment	\$5,780	\$19,404
7. CHAD		\$5,498
8. One Wood Dale Place Loan Payment	\$30,204	
9. Alden Loan Payment		\$12,000
10. Liberty Village Loan Payment		\$36,000
11. Repayment of Misc. Rehab and FTHB Loans	\$325,000	\$750,000
12. Silver Oaks Loan Payment		\$10,000
13. West Chicago Senior Apartments	\$8,950	
14. Reprogrammed	\$792,238	\$81,898
Total Estimated Program Income/Reprogrammed	\$1,568,435	\$1,162,746

All program income described in Figure 7 comes from investments in affordable housing activities. CDC policies require that all such funds remain available for new affordable housing activities. Therefore, all CDBG funds are programmed into the Housing Development Fund, and all HOME program income is programmed into new HOME activities.

CDBG FUNDING FOR NEIGHBORHOOD INVESTMENT AND COMMUNITY-WIDE BENEFIT ACTIVITIES

Figure 8
NEIGHBORHOOD INVESTMENT AND COMMUNITY-WIDE BENEFIT ACTIVITIES

Recipient of Funds	Project Description	Total Cost	CDBG Funding		Persons Benefited	Minority Benefit
			A-List*	B-List*		
Access Community Health	Health Center Expansion	\$1,500,000	\$957,284	\$4,271	4,500	68%
Village of Winfield	Cooley Avenue	\$497,662	\$248,831	\$0	180	33%
TOTAL		\$1,997,662	\$1,206,11	\$4,271	4,680	51%

*The A-list describes funding that is initially available to the project. The B-list is an additional amount that could be made available if additional dollars (e.g., reallocated funds) become available during the program year.

The A-list funded activities in Figure 8 will be supported by a total of \$791,547 in non-CDBG funds. All of this funding is expected to be from non-Federal sources. Activities are expected to be essentially complete by March 31, 2008.

CDBG AND ESG FUNDING TO MEET HOMELESS NEEDS

Figure 9
PROPOSED ACTIVITIES ADDRESSING NEEDS OF THE HOMELESS

Recipient of Funds	Project Description	Total Cost	CDBG Funding		Persons Benefited	Minority Benefit
			A-List ¹	B-List ²		
DuPage Human Services, Catholic Charities, and Hinsdale Community Services*	Homeless prevention pool for emergency rent and security deposits for persons at immediate risk of homelessness	\$526,806	\$46,856	\$0	465	59%
Bridge Communities	Improvements for Transitional Housing	\$14,900	\$14,900	\$0	25	22%
Catholic Charities	To support essential services for the DuPage Emergency Shelter	\$384,253	\$40,125	\$34,875	200	70%
Metropolitan Family Services of DuPage*	Support of maintenance and operation of the Temporary Residence for Seniors	\$120,720	\$19,066	\$20,246	7	14%
Family Shelter Service*	Support of essential services to domestic violence victims; maintenance and operation of emergency shelters	\$1,217,334	\$35,850	\$39,150	315	68%
NCO Youth and Family Services	Support of essential services to homeless youth/Cornerstone Shelter	\$498,848	\$40,350	\$34,650	30	49%
Catholic Charities	To support essential services for the DAYBREAK Homeless Prevention and Transitional Housing programs	\$508,723	\$40,800	\$34,200	2000	69%
DuPage P.A.D.S.**	Support of essential services to persons who are homeless; shelter maintenance and operation	\$537,900	\$39,150	\$35,850	1,190	34%
Bridge Communities**	Support of essential services for families in transition	\$1,540,333	\$33,825	\$41,175	199	72%
Prairie State Legal Services	Support of a legal advocacy program to prevent homelessness	\$214,290	\$27,900	\$47,100	535	51%
People's Resource Center	To support essential services for the Housing/Homeless Prevention program	\$352,011	\$19,425	\$18,075	753	74%
Serenity House	Support of essential services to persons who are homeless and recovering from substance abuse	\$1,054,017	\$33,112	\$41,888	200	16%
TOTAL		\$6,970,135	\$391,359	\$347,209	5,919	50%

1. The A-list describes funding that is initially available to the project. The B-list is an additional amount that could be made available if additional dollars (e.g., reallocated funds) become available during the program year.

* Indicates programs funded with the ESG Grant.

** Indicates a program funded with both CDBG and ESG funds.

Figure 9 indicates that a total of \$6,578,776 in non-CDBG funds will be supporting A-List activities benefiting the homeless. Of this total, \$4,579,465 is expected to be from non-Federal sources. Included in this amount is the required one-for-one matching for the ESG program. All of this leverage/match funding is expected to be from non-Federal sources. These agencies also receive other support (cash, in-kind, and volunteer) that is not reflected in Figure 9. Activities are expected to be complete by March 31, 2008.

CDBG FUNDING TO MEET THE NEEDS OF THE ELDERLY

Figure 10
PROPOSED ACTIVITIES TO ADDRESS THE NEEDS OF THE ELDERLY

Recipient of Funds	Project Description	Total Cost	CDBG Funding		Persons Benefited	Minority Benefit
			A-List*	B-List*		
Metropolitan Family Services DuPage	In-Home Elderly Respite	\$110,258	\$19,433	\$7,907	69	12%
Senior Home Sharing	Essential Services	\$228,205	\$14,065	\$0	40	1%
Humanitarian Services Project	Senior Services	\$326,630	\$0	\$10,000	115	25%
TOTAL		\$665,093	\$33,498	\$17,907	224	13%

* The A-list describes funding that is initially available to the project. The B-list is an additional amount that could be made available if additional dollars (e.g., reallocated funds) become available during the program year.

Figure 10 indicates that a total of \$631,595 in non-CDBG funds will be supporting activities benefiting elderly persons. All of this funding is expected to be from non-Federal sources. The estimates of non-CDBG leveraging in Figure 10 do not include all of the donations and other private funding that support the operation of these agencies. Activities are expected to be complete by March 31, 2008.

CDBG FUNDING TO MEET THE NEEDS OF FAMILIES IN CRISIS

Figure 11
PROPOSED ACTIVITIES ADDRESSING NEEDS OF FAMILIES IN CRISIS

Recipient of Funds	Project Description	Total Cost	CDBG Funding		Persons Benefited	Minority Benefit
			A-List*	B-List*		
Peoples' Resource Center	Support basic services in Food Pantry and Social Services Programs	\$688,067	\$15,000	\$0	17,420	65%
Family Shelter Service	Property acquisition and facility construction	\$4,100,000	\$500,000	\$0	585	45%
DuPage Community Clinic	Support Dental Services to low income persons	\$934,900	\$0	\$15,000	458	67%
Teen Parenting Connection	Support services for teen parents	\$736,396	\$15,000	\$0	330	66%
Metropolitan Family Services	Support services for teen parents	\$74,163	\$11,873	\$3,127	520	44%
Woodridge Food Pantry	Support Services	\$110,600	\$0	\$15,000	2,754	73%
TOTAL		\$6,644,126	\$541,873	\$33,127	22,067	60%

* The A-list describes funding that is initially available to the project. The B-list is an additional amount that could be made available if additional dollars (e.g., reallocated funds) become available during the program year.

Figure 11 indicates that a total of \$6,102,253 in non-CDBG funds will be supporting A-List activities benefiting families in crisis. Of this total, \$2,658,311 is expected to be from non-Federal sources. The agencies listed in Figure 11 also receive other private financing to support their operations, which is not reflected in the table. Activities are expected to be complete by March 31, 2008.

CDBG FUNDING TO MEET NEIGHBORHOOD RESOURCE NEEDS

Figure 12
PROPOSED ACTIVITIES ADDRESSING NEEDS FOR NEIGHBORHOOD RESOURCES

Recipient of Funds	Project Description	Total Cost	CDBG Funding		Persons Benefited	Minority Benefit
			A-List*	B-List*		
Outreach Community Services	Support for Junior High Summer Youth Development program, South Carol Stream	\$216,849	\$15,526	\$9,474	60	29%
Addison Police Department	Operational support for the Michael Lane NRC	\$40,000	\$14,145	\$5,855	250	92%
Addison Student Participation Center	After school crime reduction program	\$40,750	\$13,966	\$6,034	250	70%
West Chicago Police Department	Operational support for Westwood NRC	\$98,247	\$18,121	\$14,990	150	91%
West Chicago Police Department	Operational support for Main Park NRC	\$93,254	\$14,297	\$14,814	75	95%
Village of Downers Grove	Operational support for Autumn Grove NRC	\$49,555	\$13,507	\$11,270	75	88%
Village of Woodridge	Operational support for the Woodridge NRC	\$202,015	\$12,935	\$8,565	127	80%
Community House	Willowbrook Initiative	\$242,554	\$16,308	\$38,692	570	43%
York Community Services NRC	Support of Oakbrook Terrace NCR	\$86,222	\$15,000	\$0	210	77%
TOTAL		\$1,069,446	\$129,805	\$109,694	1,767	74%

* The A-list describes funding that is initially available to the project. The B-list is an additional amount that could be made available if additional dollars (e.g., reallocated funds) become available during the program year.

Figure 12 indicates that a total of \$939,641 in non-CDBG funds will be supporting A-List neighborhood resources activities. All of this funding is expected to be from non-Federal sources. In addition, there are significant investments in community policing by local communities that are not reflected in Figure 12.

Activities are expected to be complete by March 31, 2008.

CDBG FUNDING TO MEET THE NEEDS OF PEOPLE WITH DISABILITIES

Figure 13
PROPOSED ACTIVITIES ADDRESSING NEEDS OF PEOPLE WITH DISABILITIES

Recipient of Funds	Project Description	Total Cost	CDBG Funding		Persons Benefited	Minority Benefit
			A-List*	B-List*		
Prairie State Legal Services	Advocacy for persons with disabilities to obtain housing, services, and other assistance	\$123,000	\$29,311	\$20,689	100	42%
TOTAL		\$123,000	\$29,311	\$20,689	100	42%

* The A-list describes funding that is initially available to the project. The B-list is an additional amount that could be made available if additional dollars (e.g., reallocated funds) become available during the program year.

Figure 13 indicates that a total of \$93,689 in non-CDBG funds will be supporting A-List activities benefiting people with disabilities. Of this total, \$93,689 is expected to be from non-Federal sources. The agency in Table 13 also receive significant other support that is not reflected in Figure 13. Activities are expected to be complete by March 31, 2008.

CDBG SET-ASIDE FUNDING FOR OTHER HOUSING ACTIVITIES

Figure 14
PROPOSED CDBG FUNDING FOR OTHER HOUSING ACTIVITIES

Recipient of Funds	Project Description	Estimated Total Cost	CDBG Funding	Persons Benefited	Minority Benefit
DuPage County Housing Development**	Housing Development Fund (HDF) – unallocated funds reserved for affordable housing production activities	\$18,002,000	\$1,846,564	N/A	N/A
DuPage County Community Services	Single Family Rehabilitation	\$500,000	\$500,000	42	28%
DuPage County Community Services	Support for the Housing Resource Unit, which provides housing counseling, case management, fair housing, etc.	\$166,000	\$166,000	3,465	46%
TOTAL		\$18,668,000	\$2,512,564	N/A	N/A

** The County Division of Human Services manages the Housing Development Fund. However, implementation of specific projects will also be the responsibility of various public and private sector entities that apply for funding from this program.

Figure 14 indicates estimated leveraging of CDBG funding in the amount of \$16,155,436. This estimate is based on the assumption that HDF dollars will be leveraged by non-CDBG dollars at a rate similar to prior program years. It is anticipated that most of this leveraging will be from non-Federal sources. However, Low-Income Housing Tax Credit proceeds may make up some of these resources. The Housing Resource Unit activities listed in Figure 14 are expected to be completed by March 31, 2008. The HDF program accepts applications twice a year on December 1 and July 1. It is expected that all 2007 HDF dollars will be programmed by October 2007. Completion timetables for individual projects selected will be established at the time of approval.

CDBG FUNDING FOR PLANNING ACTIVITIES

Figure 15
PROPOSED CDBG FUNDING FOR PLANNING ACTIVITIES

Recipient of Funds	Project Description	Estimated Total Cost	CDBG Funding	Persons Benefited	Minority Benefit
DuPage Federation	Human services needs assessment and plan development	\$180,000	\$90,000	N/A	N/A
TOTAL		\$180,000	\$90,000	N/A	N/A

Figure 15 indicates that a total of \$90,000 in non-CDBG funds will be supporting planning activities. All of this funding is expected to be from non-Federal sources. Activities are expected to be complete by March 31, 2008.

HOME PROGRAM FUNDING FOR AFFORDABLE HOUSING ACTIVITIES

Figure 16
PROPOSED USE OF HOME FUNDS

Recipient of Funds	Project Description	Estimated Total Cost*	HOME Funding	Persons Benefited	Minority Benefit
To be determined	New construction	\$750,000	\$750,000	N/A	N/A
To be determined	Rehabilitation activities (substantial and other)	\$434,200	\$433,000	N/A	N/A
To be determined	Acquisition of property	\$1,217,450	\$972,450	N/A	N/A
To be determined	Home buyers assistance	\$8,199,000	\$1,366,156	N/A	N/A
To be determined	American Dream Downpayment Initiative	\$49,443	\$49,443	N/A	N/A
To be determined	HOME Administration	\$6,000	\$6,000	N/A	N/A
TOTAL		\$10,656,093	\$3,577,049	N/A	N/A

* For activities that are not yet committed ("to be determined"), the estimates of total costs are based on past experience for similar activities.

- **Leveraged Funding Sources:** Figure 16 estimates that a total of \$7,097,377 in non-HOME funds will be supporting HOME affordable housing activities. It is anticipated approximately half of this leveraging will be from Federal sources including the HUD Section 202 program and CDBG funds. Low-Income Housing Tax Credit proceeds may make up some of these resources.
- **Matching Fund Sources:** The HOME program requires a 25 percent non-federal match. The primary sources of matching funds will be cash contributions from below market rate private financing, funds from the State's Low Income Housing Trust Fund, and the value of donated land.
- **Timetable:** Applications are accepted for ADDI and HOME funds twice a year on December 1 and July 1. It is expected that all 2005 HOME dollars will be programmed by October 2007. Completion timetables for individual projects selected will be established at the time of approval.
- **Set-aside for CHDO's:** Figure 16 programs funding from the new 2007 HOME and ADDI grants as well as program income. HOME regulations require that 15% of the new funds be set aside for qualified Community Development Housing Organizations (CHDO's). Program income is exempt from the 15% set-aside rule. Therefore, at least \$359,411 of the funds in Figure 16 is reserved for qualified CHDO's. Eligible organizations in the DuPage Consortium area are the Community Housing Association of DuPage, Housing Continuum, Inc., and PADS. CHAD has a pending proposal, which exceeds \$900,000. Action on this proposal is expected before the start of the 2007 program year.
- **Recapture Provisions:** The HOME funds in Figure 16 that will be used for homebuyer assistance will be subject to recapture. All HOME-assisted homebuyer assistance will be secured by a mortgage on the property. When the property is sold, the title transfers, or is no longer occupied by the HOME-eligible household that originally purchased the property, the entire amount of the HOME investment becomes due or, in the event of foreclosure, net proceeds from the sale shall be recaptured. Recaptured funds will be used for other HOME-eligible activities.
- **Minority Participation:** Based upon past experience, we estimate that 34% of the households assisted with HOME and ADDI funds for homeownership activities will be minority. That is 80% greater than the minority representation in the general population.

CDBG FUNDING FOR ADMINISTRATION OF CDBG AND ESG PROGRAMS

Figure 17
PROPOSED FUNDING FOR ADMINISTRATION OF CDBG AND ESG PROGRAMS

Recipient of Funds	Project Description	Estimated Total Cost	CDBG Funding
DuPage County Community Development Commission	Administration of CDBG and ESG programs	\$850,000	\$850,000
HOPE Fair Housing	Fair housing enforcement and education activities	\$430,000	\$50,000
TOTAL		\$1,280,000	\$900,000

Figure 17 indicates that a total of \$380,000 in non-CDBG funds will be supporting fair housing activities. Of this amount, it is expected that about 60% will be from Federal sources. Activities are expected to be complete by March 31, 2008.