

1

---

---

---

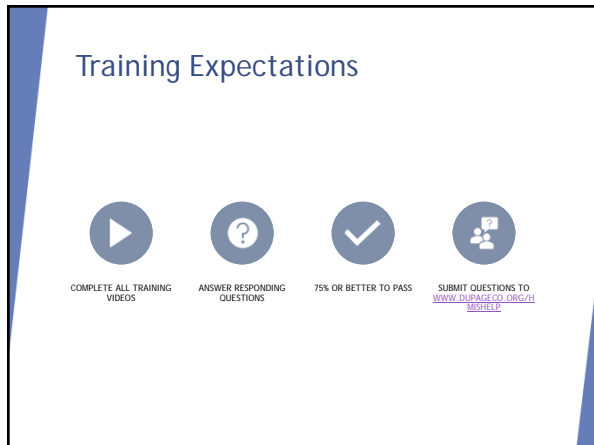
---

---

---

---

---



2

---

---

---

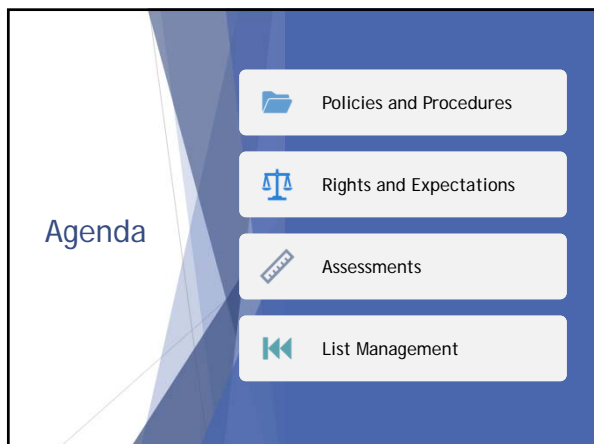
---

---

---

---

---



3

---

---

---

---

---

---

---

---



4

---

---

---

---

---

---

---

---



5

---

---

---

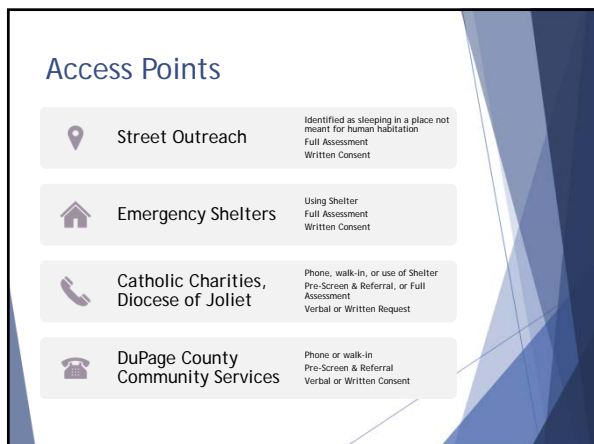
---

---

---

---

---



6

---

---

---

---

---

---

---

---



7

---

---

---

---

---

---

---

---



8

---

---

---

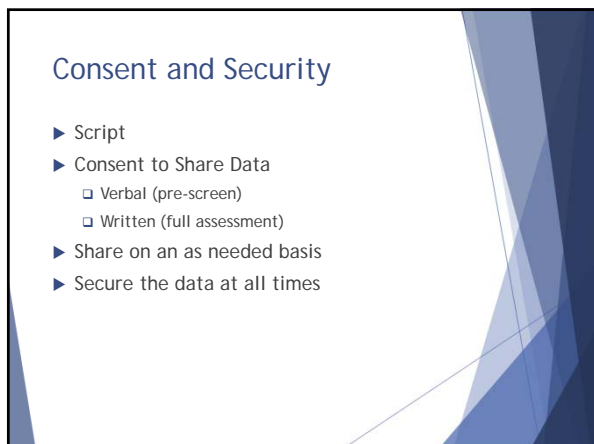
---

---

---

---

---



9

---

---

---

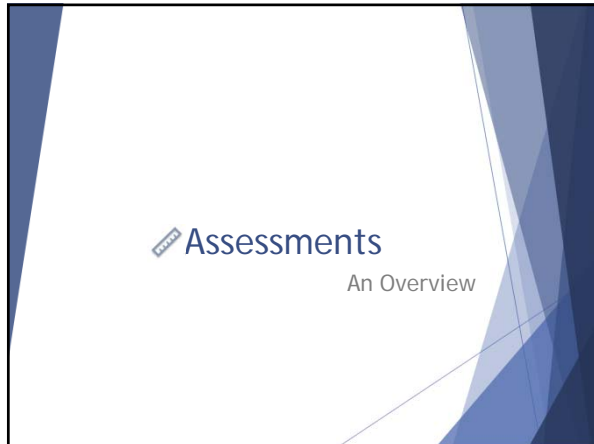
---

---

---

---

---



10

---

---

---

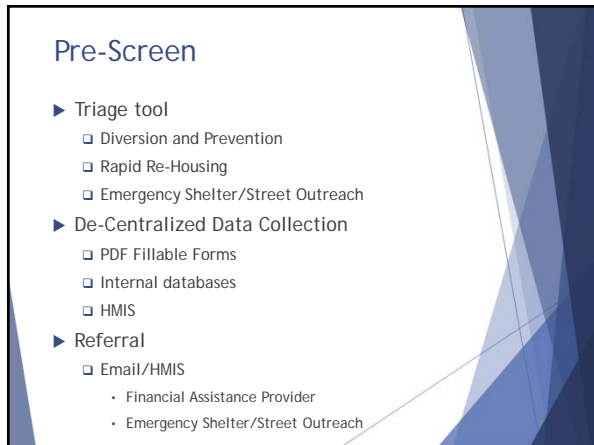
---

---

---

---

---



11

---

---

---

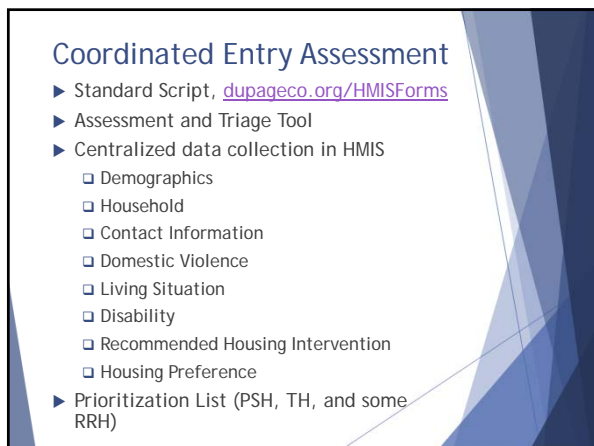
---

---

---

---

---



12

---

---

---

---

---

---

---

---

### DuPage CoC Coordinated Entry Assessment: VI-SPDAT

- ▶ OrgCode VI-SPDAT Series, [OrgCode.com](http://OrgCode.com)
- ▶ Triage Tool
- ▶ Required Training
  - [OrgCode VI-SPDAT for Singles Training \(VIMEO\)](#)
  - [OrgCode VI-SPDAT for Families Training \(VIMEO\)](#)

---

---

---

---

---

---

---

---

13

### VI-SPDAT Do's and Don'ts

<b>Do</b>	<b>Don't</b>
<ul style="list-style-type: none"><li>▶ Read the script and questions verbatim</li><li>▶ Review their rights and seek client consent</li><li>▶ Explain that the CoC is a group of programs working together to better serve them</li><li>▶ Note that their responses help us better understand their needs and appropriate resources to match them with</li><li>▶ Mention the housing intervention being recommended</li><li>▶ Be upfront with what to expect</li></ul>	<ul style="list-style-type: none"><li>▶ Mention there is a score or tell them what their score is - just explain the appropriate intervention</li><li>▶ Guarantee housing or give them a timeframe</li><li>▶ Tell them the most vulnerable or "people who need services the most" are being prioritized</li><li>▶ Give the VI-SPDAT to others or circulate it to people not trained</li><li>▶ Deviate from the Survey (or Case Manage)</li></ul>

---

---

---

---

---

---

---

---

14

### Follow-up

- ▶ DuPage CoC Coordinated Entry System Overview Form, [dupageco.org/HMISForms](http://dupageco.org/HMISForms)
- ▶ Report Changes
- ▶ Respond to Contacts

---

---

---

---

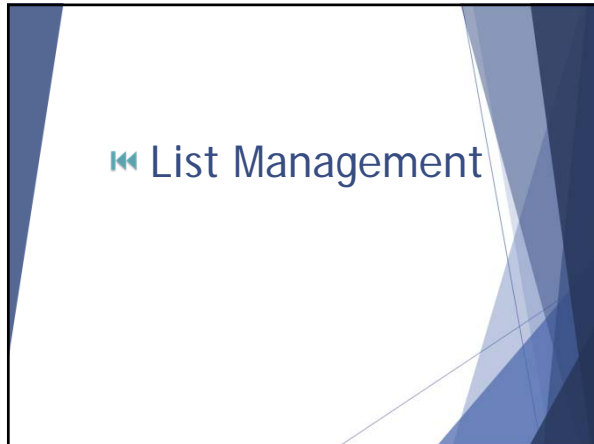
---

---

---

---

15



16

---

---

---

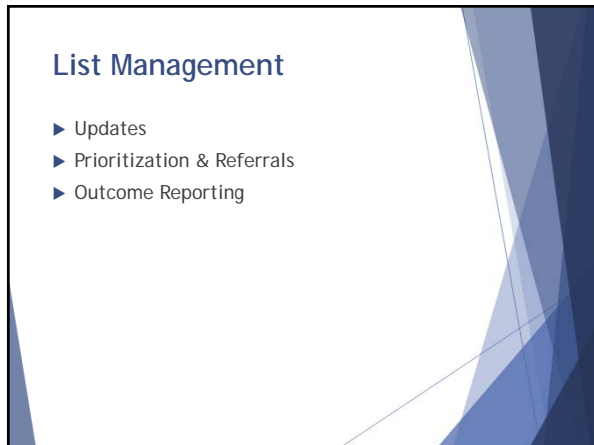
---

---

---

---

---



17

---

---

---

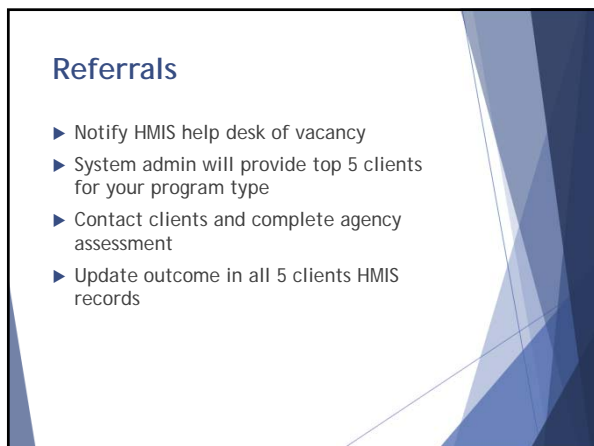
---

---

---

---

---



18

---

---

---

---

---

---

---

---

### Staffings

- ▶ Chronic Homeless Assessment Team (CHAT)
- ▶ Veteran's Taskforce

19

---

---

---

---

---

---

---

---

### Resources

- ▶ [www.dupagecris.org](http://www.dupagecris.org) - DuPage area resource listings
- ▶ [www.dupageco.org/hmis](http://www.dupageco.org/hmis) - HMIS workflows, policies, forms, and more
- ▶ [www.dupageco.org/HMISHelp](http://www.dupageco.org/HMISHelp) - HMIS Help Desk Ticketing System
- ▶ OrgCode Free Online Training Series
  - VI-SPDAT- <https://vimeo.com/126548635>
  - Family VI-SPDAT - <https://vimeo.com/126591317>

20

---

---

---

---

---

---

---

---

### Resources

- ▶ National Alliance to End Homelessness Coordinated Assessment Toolkit  
[www.endhomelessness.org/pages/front-door-strategies](http://www.endhomelessness.org/pages/front-door-strategies)
- ▶ Coordinated Assessment Presented by USICH and HUD March 20, 2012 [www.usich.gov/](http://www.usich.gov/)
- ▶ DuPage County CoC Coordinated Entry Policy (PDF) [www.dupagehomeless.org](http://www.dupagehomeless.org)
- ▶ [www.hudexchange.info](http://www.hudexchange.info)
  - ▶ HUD Coordinated Entry Policy Brief (PDF)
  - ▶ HUD CoC Interim Rule at 24 CFR 578.7(a)(8) published July 2012
  - ▶ Hearth Act
  - ▶ HUD Notice CPD-16-11 Prioritizing Persons .in Permanent Supportive Housing

21

---

---

---

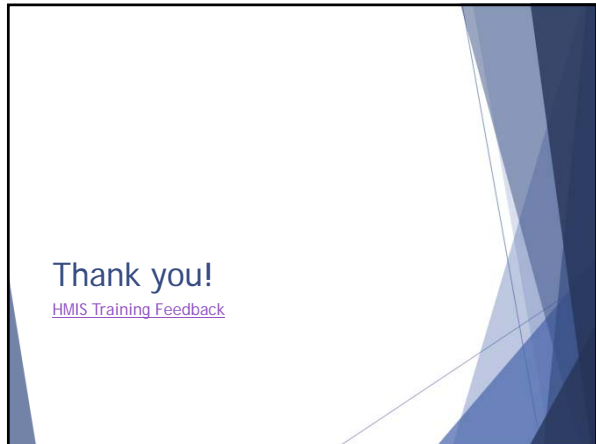
---

---

---

---

---



22

---

---

---

---

---

---

---

---