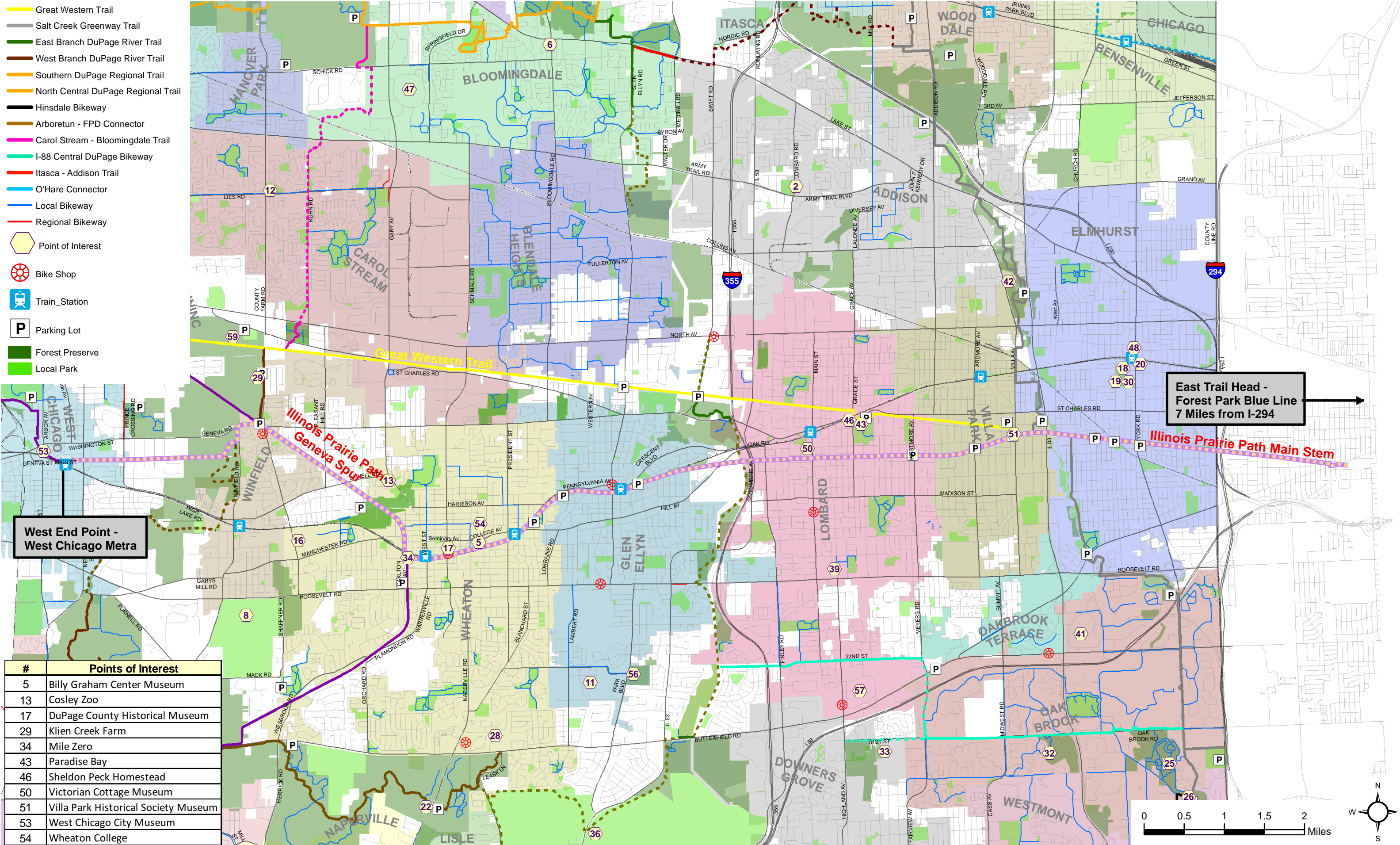




IPP East-West Bike Ride

Ride Length: Approximately 23 Miles (One-Way)

- ▬ Blue Line Special
- ▬ Illinois Prairie Path
- ▬ Great Western Trail
- ▬ Salt Creek Greenway Trail
- ▬ East Branch DuPage River Trail
- ▬ West Branch DuPage River Trail
- ▬ Southern DuPage Regional Trail
- ▬ North Central DuPage Regional Trail
- ▬ Hinsdale Bikeway
- ▬ Arboretum - FPD Connector
- ▬ Carol Stream - Bloomingdale Trail
- ▬ I-88 Central DuPage Bikeway
- ▬ Itasca - Addison Trail
- ▬ O'Hare Connector
- ▬ Local Bikeway
- ▬ Regional Bikeway
- Point of Interest
- ⊗ Bike Shop
- ⊗ Train Station
- P Parking Lot
- Forest Preserve
- Local Park



**West End Point -
West Chicago Metra**

**East Trail Head -
Forest Park Blue Line
7 Miles from I-294**

#	Points of Interest
5	Billy Graham Center Museum
13	Cosley Zoo
17	DuPage County Historical Museum
29	Klien Creek Farm
34	Mile Zero
43	Paradise Bay
46	Sheldon Peck Homestead
50	Victorian Cottage Museum
51	Villa Park Historical Society Museum
53	West Chicago City Museum
54	Wheaton College