

Map Index Interpretation Guide

NOTES TO USERS

This map is for use in administering the DuPage Regulatory Flood Program. It does not necessarily identify all areas subject to flooding, particularly from local drainage sources of small size. The community map repository should be consulted for possible updated or additional flood hazard information.

Users should be aware that Base Flood Elevations (BFEs) shown on the RFM represent rounded whole foot elevations. The BFEs are intended for regulatory enforcement purposes only and should not be used as the sole source of flood elevation information.

The projection used in the preparation of this map is State Plane zone 3376, Fipszone 1201. The horizontal datum is NAD83, on the GRS1980 spheroid. Differences in datum, spheroid, projection or State Plane zones used in the production of RFMs for adjacent jurisdictions may result in slight positional differences in map features across jurisdictional boundaries. The differences do not affect the accuracy of this RFM.

Flood elevations on this map are referenced to the National Geodetic Vertical Datum of 1929. These flood elevations must be compared to structures and ground elevations referenced to the same vertical datum. For information regarding conversion between the National Geodetic Vertical Datum of 1929 and the North American Vertical Datum of 1988, visit the National Geodetic Survey at its website at www.ngs.noaa.gov or contact it at the following address:

Spatial Reference System Division
National Geodetic Survey, NOAA, Silver Spring Metro Center
1315 East-West Highway, Silver Spring, Maryland 20910
(301)713-3191

BASE MAP SOURCE: Base map information was obtained in 2008 from AeroMetric, Inc. These maps were photogrammetrically compiled at a scale of 1:1200 (1" = 100') based on LIDAR data acquired using AeroMetric's Digital Mapping Camera in Spring 2006. Aerial photography was also acquired soon after the LIDAR flight for areas within the County.

Corporate limits shown on this map are based on the best data available at the time of publication. Because changes due to annexations or de-annexations may have occurred after this map was published, map users should contact appropriate community officials to verify current corporate limit locations.

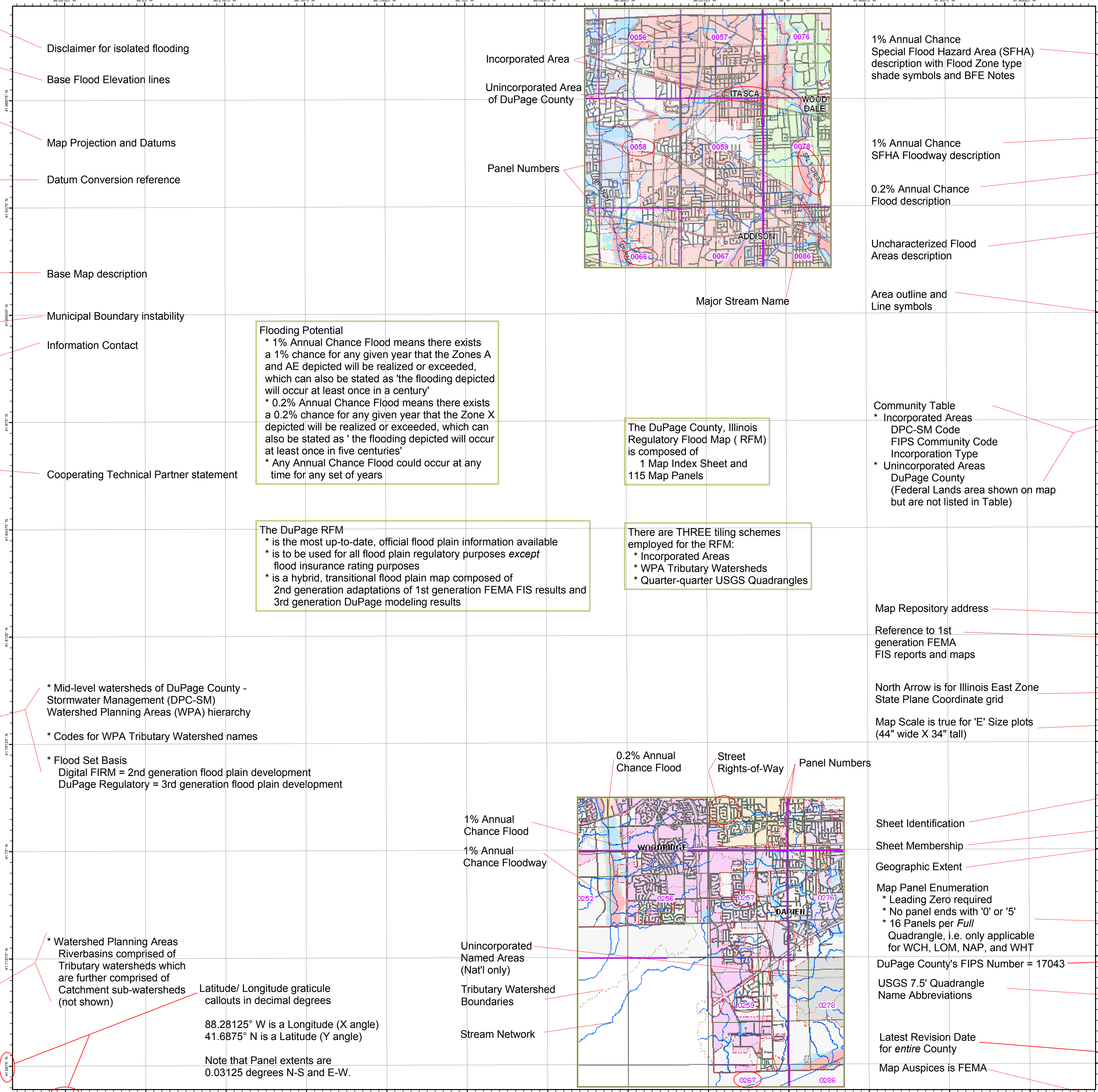
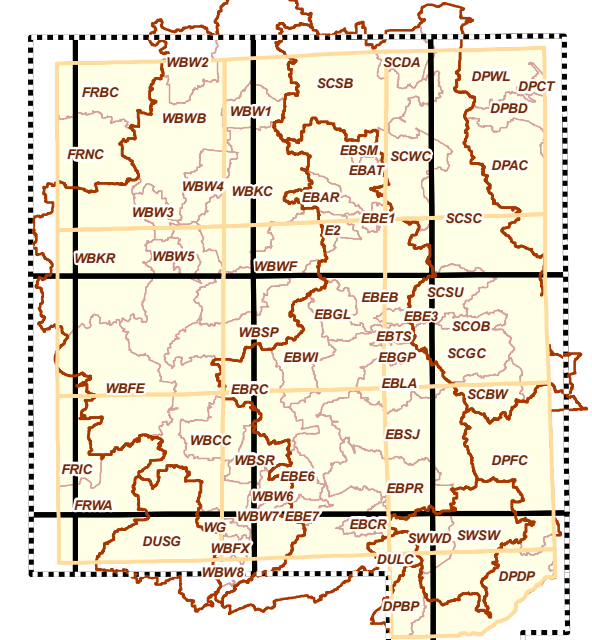
If you have questions about this map or questions concerning the DuPage Regulatory Flood Program in general, please call 1-630-407-6800 or visit the DuPage County Stormwater Management.



This digital Regulatory Flood Map (RFM) was produced through a unique cooperative partnership between DuPage County and the Federal Emergency Management Agency (FEMA). DuPage County has implemented a long term approach of floodplain management to decrease the costs associated with flooding. This is demonstrated by the County's commitment to map floodplain areas at the local level. As a part of this effort, DuPage County has joined in a Cooperative Technical Partnership agreement with FEMA to produce this digital RFM.

Code	Riverbasin Watershed	Tributary Watershed	Flood Set Basis
DPA	Des Plaines River Trib.	Des Plaines River Trib.	Digital RFM
DPA1	Des Plaines River Trib.	Black Panther Crk.	Digital RFM
DPA2	Des Plaines River Trib.	Man Stem	Digital RFM
DPA3	Des Plaines River Trib.	Man Stem	Digital RFM
DPA4	Des Plaines River Trib.	Man Stem	Digital RFM
DPA5	Des Plaines River Trib.	Man Stem	Digital RFM
DPA6	Des Plaines River Trib.	Man Stem	Digital RFM
DPA7	Des Plaines River Trib.	Man Stem	Digital RFM
DPA8	Des Plaines River Trib.	Man Stem	Digital RFM
DPA9	Des Plaines River Trib.	Man Stem	Digital RFM
DPA10	Des Plaines River Trib.	Man Stem	Digital RFM
DPA11	Des Plaines River Trib.	Man Stem	Digital RFM
DPA12	Des Plaines River Trib.	Man Stem	Digital RFM
DPA13	Des Plaines River Trib.	Man Stem	Digital RFM
DPA14	Des Plaines River Trib.	Man Stem	Digital RFM
DPA15	Des Plaines River Trib.	Man Stem	Digital RFM
DPA16	Des Plaines River Trib.	Man Stem	Digital RFM
DPA17	Des Plaines River Trib.	Man Stem	Digital RFM
DPA18	Des Plaines River Trib.	Man Stem	Digital RFM
DPA19	Des Plaines River Trib.	Man Stem	Digital RFM
DPA20	Des Plaines River Trib.	Man Stem	Digital RFM
DPA21	Des Plaines River Trib.	Man Stem	Digital RFM
DPA22	Des Plaines River Trib.	Man Stem	Digital RFM
DPA23	Des Plaines River Trib.	Man Stem	Digital RFM
DPA24	Des Plaines River Trib.	Man Stem	Digital RFM
DPA25	Des Plaines River Trib.	Man Stem	Digital RFM
DPA26	Des Plaines River Trib.	Man Stem	Digital RFM
DPA27	Des Plaines River Trib.	Man Stem	Digital RFM
DPA28	Des Plaines River Trib.	Man Stem	Digital RFM
DPA29	Des Plaines River Trib.	Man Stem	Digital RFM
DPA30	Des Plaines River Trib.	Man Stem	Digital RFM
DPA31	Des Plaines River Trib.	Man Stem	Digital RFM
DPA32	Des Plaines River Trib.	Man Stem	Digital RFM
DPA33	Des Plaines River Trib.	Man Stem	Digital RFM
DPA34	Des Plaines River Trib.	Man Stem	Digital RFM
DPA35	Des Plaines River Trib.	Man Stem	Digital RFM
DPA36	Des Plaines River Trib.	Man Stem	Digital RFM
DPA37	Des Plaines River Trib.	Man Stem	Digital RFM
DPA38	Des Plaines River Trib.	Man Stem	Digital RFM
DPA39	Des Plaines River Trib.	Man Stem	Digital RFM
DPA40	Des Plaines River Trib.	Man Stem	Digital RFM
DPA41	Des Plaines River Trib.	Man Stem	Digital RFM
DPA42	Des Plaines River Trib.	Man Stem	Digital RFM
DPA43	Des Plaines River Trib.	Man Stem	Digital RFM
DPA44	Des Plaines River Trib.	Man Stem	Digital RFM
DPA45	Des Plaines River Trib.	Man Stem	Digital RFM
DPA46	Des Plaines River Trib.	Man Stem	Digital RFM
DPA47	Des Plaines River Trib.	Man Stem	Digital RFM
DPA48	Des Plaines River Trib.	Man Stem	Digital RFM
DPA49	Des Plaines River Trib.	Man Stem	Digital RFM
DPA50	Des Plaines River Trib.	Man Stem	Digital RFM
DPA51	Des Plaines River Trib.	Man Stem	Digital RFM
DPA52	Des Plaines River Trib.	Man Stem	Digital RFM
DPA53	Des Plaines River Trib.	Man Stem	Digital RFM
DPA54	Des Plaines River Trib.	Man Stem	Digital RFM
DPA55	Des Plaines River Trib.	Man Stem	Digital RFM
DPA56	Des Plaines River Trib.	Man Stem	Digital RFM
DPA57	Des Plaines River Trib.	Man Stem	Digital RFM
DPA58	Des Plaines River Trib.	Man Stem	Digital RFM
DPA59	Des Plaines River Trib.	Man Stem	Digital RFM
DPA60	Des Plaines River Trib.	Man Stem	Digital RFM
DPA61	Des Plaines River Trib.	Man Stem	Digital RFM
DPA62	Des Plaines River Trib.	Man Stem	Digital RFM
DPA63	Des Plaines River Trib.	Man Stem	Digital RFM
DPA64	Des Plaines River Trib.	Man Stem	Digital RFM
DPA65	Des Plaines River Trib.	Man Stem	Digital RFM
DPA66	Des Plaines River Trib.	Man Stem	Digital RFM
DPA67	Des Plaines River Trib.	Man Stem	Digital RFM
DPA68	Des Plaines River Trib.	Man Stem	Digital RFM
DPA69	Des Plaines River Trib.	Man Stem	Digital RFM
DPA70	Des Plaines River Trib.	Man Stem	Digital RFM
DPA71	Des Plaines River Trib.	Man Stem	Digital RFM
DPA72	Des Plaines River Trib.	Man Stem	Digital RFM
DPA73	Des Plaines River Trib.	Man Stem	Digital RFM
DPA74	Des Plaines River Trib.	Man Stem	Digital RFM
DPA75	Des Plaines River Trib.	Man Stem	Digital RFM
DPA76	Des Plaines River Trib.	Man Stem	Digital RFM
DPA77	Des Plaines River Trib.	Man Stem	Digital RFM
DPA78	Des Plaines River Trib.	Man Stem	Digital RFM
DPA79	Des Plaines River Trib.	Man Stem	Digital RFM
DPA80	Des Plaines River Trib.	Man Stem	Digital RFM
DPA81	Des Plaines River Trib.	Man Stem	Digital RFM
DPA82	Des Plaines River Trib.	Man Stem	Digital RFM
DPA83	Des Plaines River Trib.	Man Stem	Digital RFM
DPA84	Des Plaines River Trib.	Man Stem	Digital RFM
DPA85	Des Plaines River Trib.	Man Stem	Digital RFM
DPA86	Des Plaines River Trib.	Man Stem	Digital RFM
DPA87	Des Plaines River Trib.	Man Stem	Digital RFM
DPA88	Des Plaines River Trib.	Man Stem	Digital RFM
DPA89	Des Plaines River Trib.	Man Stem	Digital RFM
DPA90	Des Plaines River Trib.	Man Stem	Digital RFM
DPA91	Des Plaines River Trib.	Man Stem	Digital RFM
DPA92	Des Plaines River Trib.	Man Stem	Digital RFM
DPA93	Des Plaines River Trib.	Man Stem	Digital RFM
DPA94	Des Plaines River Trib.	Man Stem	Digital RFM
DPA95	Des Plaines River Trib.	Man Stem	Digital RFM
DPA96	Des Plaines River Trib.	Man Stem	Digital RFM
DPA97	Des Plaines River Trib.	Man Stem	Digital RFM
DPA98	Des Plaines River Trib.	Man Stem	Digital RFM
DPA99	Des Plaines River Trib.	Man Stem	Digital RFM
DPA100	Des Plaines River Trib.	Man Stem	Digital RFM

DuPage Principal Watersheds



Disclaimer for isolated flooding

Base Flood Elevation lines

Map Projection and Datums

Datum Conversion reference

Base Map description

Municipal Boundary instability

Information Contact

Cooperating Technical Partner statement

* Mid-level watersheds of DuPage County - Stormwater Management (DPC-SM) Watershed Planning Areas (WPA) hierarchy

* Codes for WPA Tributary Watershed names

* Flood Set Basis
Digital FIRM = 2nd generation flood plain development
DuPage Regulatory = 3rd generation flood plain development

* Watershed Planning Areas Riverbasins comprised of Tributary watersheds which are further comprised of Catchment sub-watersheds (not shown)

Flooding Potential
* 1% Annual Chance Flood means there exists a 1% chance for any given year that the Zones A and AE depicted will be realized or exceeded, which can also be stated as 'the flooding depicted will occur at least once in a century'
* 0.2% Annual Chance Flood means there exists a 0.2% chance for any given year that the Zone X depicted will be realized or exceeded, which can also be stated as 'the flooding depicted will occur at least once in five centuries'
* Any Annual Chance Flood could occur at any time for any set of years

The DuPage RFM
* is the most up-to-date, official flood plain information available
* is to be used for all flood plain regulatory purposes *except* flood insurance rating purposes
* is a hybrid, transitional flood plain map composed of 2nd generation adaptations of 1st generation FEMA FIS results and 3rd generation DuPage modeling results

There are THREE tiling schemes employed for the RFM:
* Incorporated Areas
* WPA Tributary Watersheds
* Quarter-quarter USGS Quadrangles

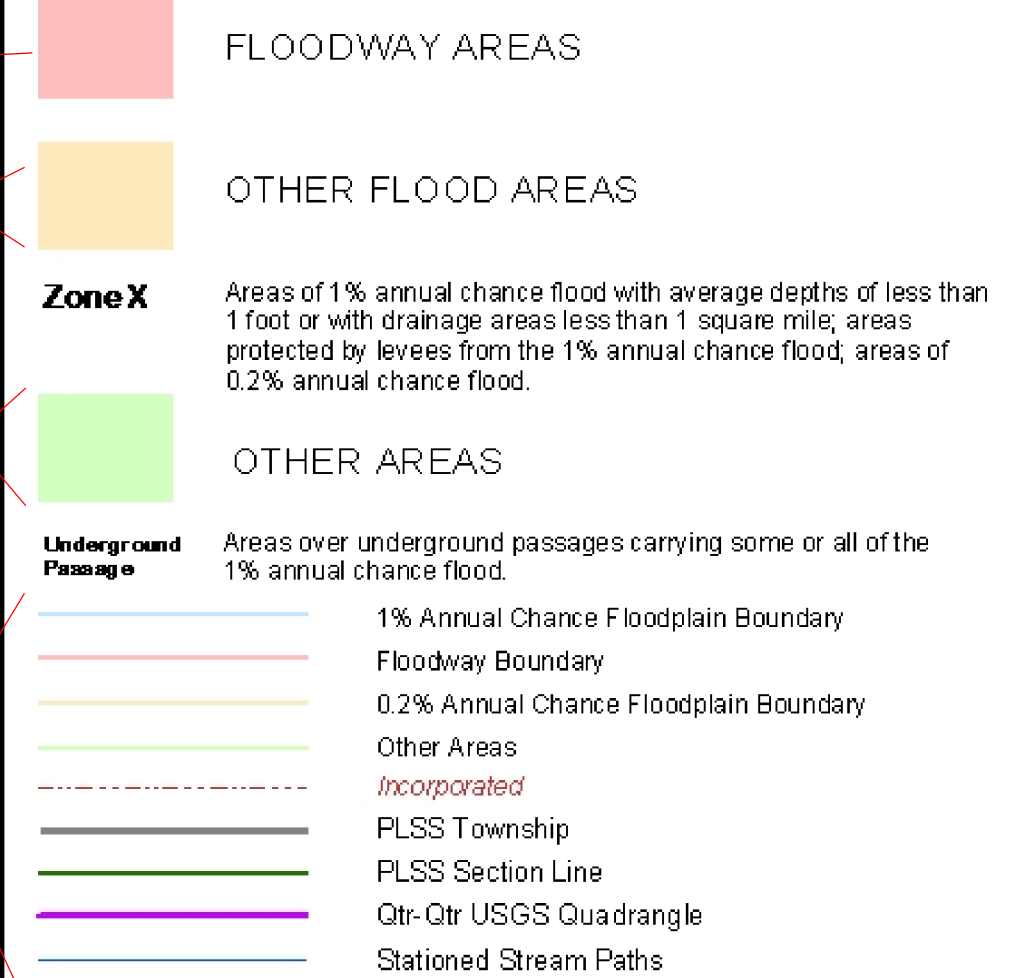
Latitude/ Longitude graticule callouts in decimal degrees
88.28125° W is a Longitude (X angle)
41.6875° N is a Latitude (Y angle)
Note that Panel extents are 0.03125 degrees N-S and E-W.

LEGEND

SPECIAL FLOOD HAZARD AREAS INUNDATED BY THE 1% ANNUAL CHANCE FLOOD EVENTS

The 1% annual chance flood (100-year flood), also known as the base flood, is the flood that has a 1% chance of being equaled or exceeded in any given year. The Special Flood Hazard Area is the area subject to flooding by the 1% annual chance flood. Areas of Special Flood Hazard include Zones A, AE, AH, AO, AR, A99, V, and VE. The Base Flood Elevation is the water surface elevation of the 1% annual chance flood.

Zone AE Base flood elevations determined, BFE lines shown.
Zone A Base flood elevations undetermined.



Community	Code	FIPS#	Type
ADDISON	1	171216	Village
AURORA	2	171323	City
BARKETT	3	171329	City
BATAVIA	4	171321	City
BLOOMINGDALE	5	171320	Village
BOLINGBROOK	6	171327	Village
BURNING WOODS	7	171322	Village
CAROL STREAM	8	171324	Village
CHICAGO	9	171325	City
CLARENDON HILLS	11	171323	Village
DARLEM	12	171320	Village
DOWNS GROVE	13	171324	Village
ELK GROVE VILLAGE	14	171328	Village
ELLEN VILLAGE	15	171327	City
GRAND HEIGHTS	16	171329	Village
HANOVER PARK	18	171329	Village
HENSLEY	19	171327	Village
ITASCIA	20	171321	Village
LEMONT	21	171327	Village
LESLIE	22	171321	Village
LOMBARD	23	171322	City
LUNFORD	24	171324	Village
OAK BROOK	25	171324	Village
QUAMBRIDGE TERRACE	26	171328	Village
ROSELLE	27	171328	Village
SCHAUMBURG	28	171328	City
ST CHARLES	29	171329	City
UNION HOOK	30	171327	Village
UNION HEIGHTS	31	171328	City
WARRENVILLE	32	171328	City
WEST CHICAGO	33	171329	City
WHEATON	35	171321	City
WILLBROOK	36	171322	Village
WOOD Dale	38	171324	City
WOODRIDGE	39	171327	Village

MAP REPOSITORY
DuPage County Stormwater Management
421 N. County Farm Rd., Wheaton, IL 60187

Reference to 1st generation FEMA FIS reports and maps
For community map revision history prior to countywide mapping, refer to the Community Map History table located in the Flood Insurance Study reports for the jurisdictions appearing in these map panels.
To determine if flood regulations apply in these Map Panels, contact the DuPage County Stormwater Management at 1-630-407-6800.

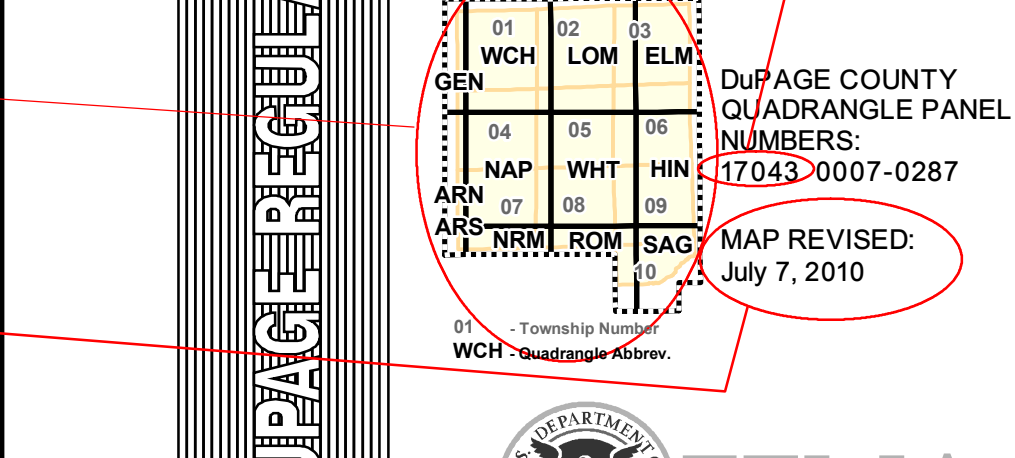
North Arrow is for Illinois East Zone State Plane Coordinate grid

Map Scale is true for 'E' Size plots (44" wide X 34" tall)

MAP INDEX

RFM REGULATORY FLOOD MAP
DUPAGE COUNTY, ILLINOIS and INCORPORATED AREAS

PANELS PRINTED:
USGS Quadrangle | Panel Set
GEN GENEVA | 0007 to 0019
WCH WEST CHICAGO | 0026 to 0044
LOM LOMBARD | 0051 to 0069
ELM ELMHURST | 0076 to 0093
ARN AURORA NORTH | 0107 to 0119
NAP NAPERVILLE | 0126 to 0144
WHT WHEATON | 0151 to 0169
WHN HENSLEY | 0176 to 0193
ARS AURORA SOUTH | 0207
NRM NORMANTOWN | 0226 to 0232
ROM ROMEOVILLE | 0251 to 0267
SAG SAG BRIDGE | 0276 to 0287



Latest Revision Date for entire County
Map Auspices is FEMA

